

DEEPWATER CORCOVADO

ULTRA-DEEPWATER DUAL-ACTIVITY DRILLSHIP



For additional information please contact:

Transocean
Marketing Department
1414 Enclave Parkway
Houston, TX 77077, USA
Phone: + 1-713-232-7500
Fax: + 1-713-232-7880
marketing@deepwater.com
www.deepwater.com

General Description

Design / Generation	Enhanced Samsung 10000
Constructing Shipyard	Samsung Heavy Industries, South Korea
Year Entered Service / Significant Upgrades	2011
Classification	ABS +A1 Drilling Unit E-circle, +AMS +ACCU +DPS-3 +CDS MPD-Ready (RRDA, UWILD, CRC, SH-DLA, NBLES, RW)
Flag	Liberia
Dimensions	748 ft. (228 m) x 137.8 ft. (42 m) beam x 62.3 ft. (19 m) depth
Drafts	37.7 ft (11.5 m) operating / 37.7 ft survival / 27.9 ft (8.5 m) transit
Accommodation	205 persons
Displacement	105,822 st (96,000 mt) operating / 73,304 st (66,500 mt) transit
Variable Deck	22,046 st (20,000 mt) operating & survival / 18,188 st (16,500 mt) transit
Transit Speed	up to 12 knots
Maximum Water Depth	10,000 ft (3,048 m) designed / 10,000 ft outfitted
Maximum Drilling Depth	35,000 ft. (10,668 m)

Drilling Equipment

Derrick	NOV Beam Leg Dual Dynamic Bottleneck Type, 200 ft. (70 m) x 60 ft. (18.3 m) x 80 ft. (24.4 m)
Hookload Capacity	(Main) 1,000 st (907 mt) capacity (Aux) 1,000 st (907 mt) capacity
Drawworks	2 x NOV SSGD-1000, 5750hp, 1000 st (907 mt)
Compensator	2 x NOV CMC, 1000 st (907 mt) / 500 st (454mt)
Rotary Table	(Main) NOV RST 605 hydraulic 60-1/2" (Aux) NOV RST 605 60-1/2" false rotary table
Top Drive	2 x NOV HPS-1000, 1000 st (907 mt)
Tubular Handling	2 x NOV pipe handlers, 2x NOV MPT Iron Roughnecks with TF-975 tool frame, fwd and aft catwalk machines
Mud Pumps	5 x HP Triplex mud pumps NOV-14P-220, 2200hp, 7500psi
Solids Control	6 x VSM 300 shale shakers

Power & Machinery

Main Power	6 x STX-MAN 16V32/40 diesel engines, rated 8,000 kW each 6 x ABB AMG 900 LSE generators, rated 7,000 kW each
Emergency Power	1 x STX Cummins / QSK60DMGE diesel engine rated 2,547 kW, driving 1 x Newage / PM734E1 1,350 kW generator.

Storage Capacities

Fuel Oil	53,770 bbl. (8,549 m3)
Liquid Mud	6,466 bbl. (1,028 m3) active / 7,960 bbl. (1,266 m3) reserve
Base Oil	3,130 bbl. (498 m3)
Brine	10,899 bbl. (1,733 m3)
Drill Water	18,030 bbl. (2,867 m3)
Potable Water	8,820 bbl. (1,402 m3)
Bulk Material	(mud + cement) 33,050 cu.ft. (936 m3)
Sack Storage	26 ft. (8 m) x 62 ft. (19 m) x 13 ft. (4 m)

BOP & Subsea Equipment

BOP	NOV Shaffer 6 ram 18/ 3/4" NXT BOP. 15,000psi
Wellhead Connector	Vetco Super HD H4
Annulars	2 x NOV Shaffer 10,000psi
Marine Riser	NOV Shaffer FT-H 21" OD Flanged. With 4 1/2" ID K/C lines, 4" ID booster line and 2ea conduit lines
Tensioners	8 x dual (16 ea) NOV DWRT 100st (91 mt) each
Diverter	NOV Shaffer 21 1/4" 500psi
BOP Control	NOV 112-Line 5th Generation MUX Pod
Moonpool	84 ft. (25.6 m) x 41 ft. (12.48 m)

Station Keeping / Propulsion System

Thrusters	6 x Rolls Royce UUC 455 azimuth thrusters
DP System	DP Class 3 Kongsberg / ICMS / K-POS

Cranes

Cranes	4 x NOV OC3932KCE Knuckle Boom Crane 94 st (85 mt)
--------	--

Other Information

Helideck	89 ft. (27.2 m) x 27.2 m, 23 st (21 mt) load capacity, rated for Chinook helicopters
----------	--

Additional Features MPD Ready - Upgraded

BOUNDLESS

Revision Date: 2 December 2025



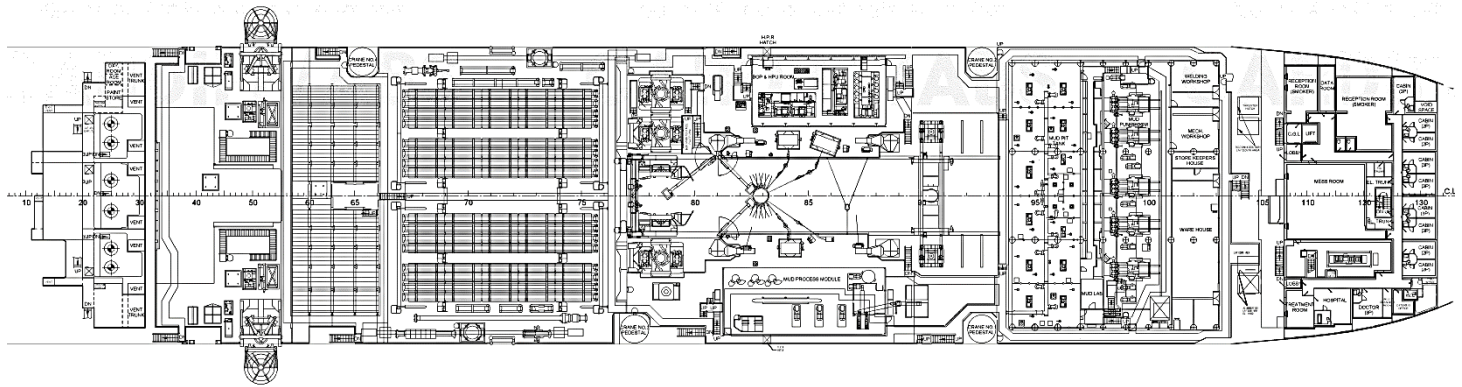
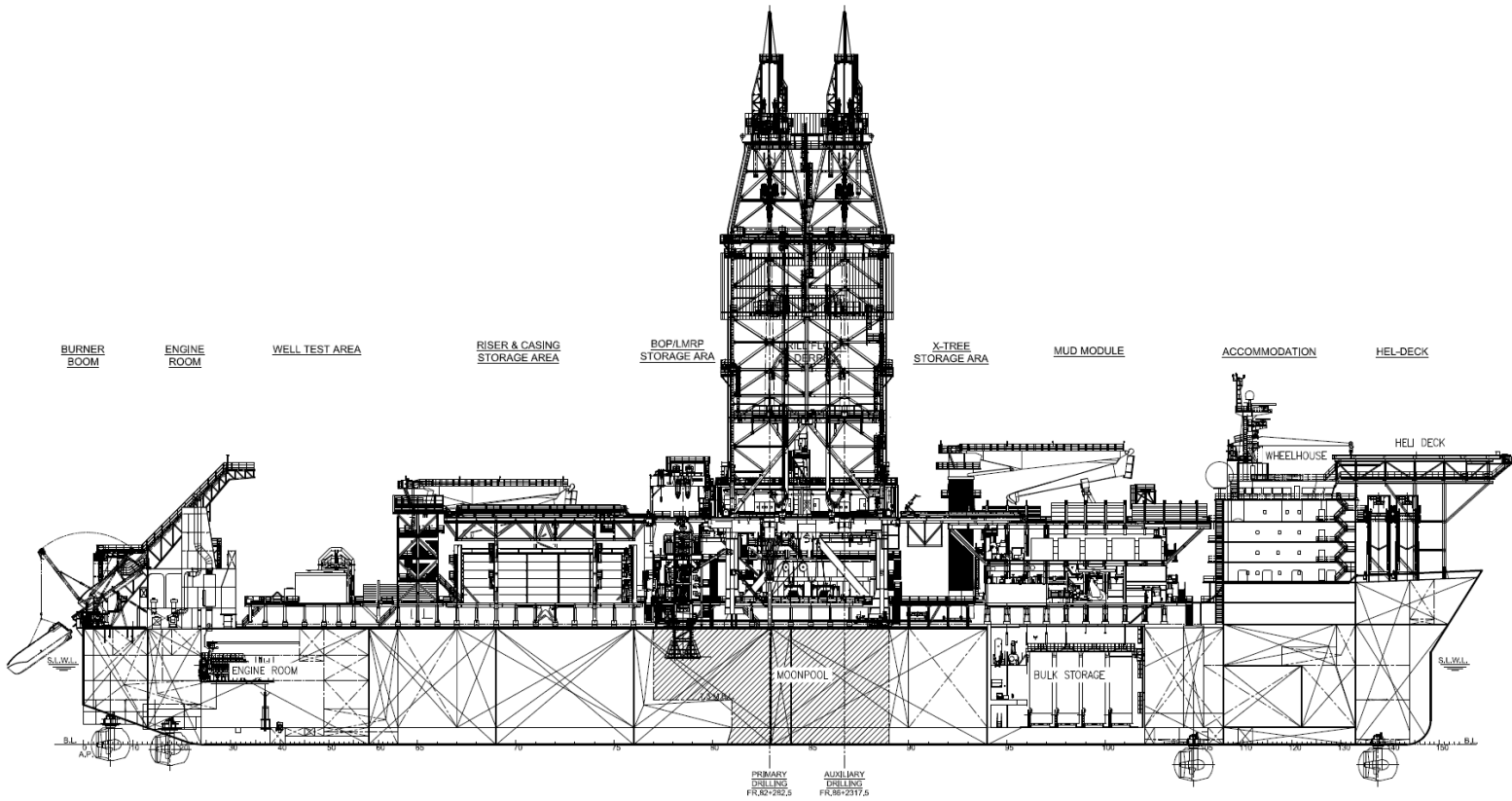
SERVICE FOCUSED
DATA DRIVEN
PERFORMANCE ORIENTED

These specifications are intended for general reference purposes only, as actual equipment and specifications may vary based upon subsequent changes, the contract situation and customer needs. All equipment shall be operated and maintained at all times, in compliance with Transocean standard operating manuals, policies and procedures, and within its stated operational limits or continuous rated capacity, in order to assure maximum operational efficiency.

Patent Notice: This rig, its systems, components, and/or equipment in use on this rig, may be protected by one or more US and/or foreign patents.

DEEPWATER CORCOVADO

ULTRA-DEEPWATER DUAL-ACTIVITY DRILLSHIP



BOUNDLESS

Revision Date: 2 December 2025



SERVICE FOCUSED
DATA DRIVEN
PERFORMANCE ORIENTED

These specifications are intended for general reference purposes only, as actual equipment and specifications may vary based upon subsequent changes, the contract situation and customer needs. All equipment shall be operated and maintained at all times, in compliance with Transocean standard operating manuals, policies and procedures, and within its stated operational limits or continuous rated capacity, in order to assure maximum operational efficiency.

Patent Notice: This rig, its systems, components, and/or equipment in use on this rig, may be protected by one or more US and/or foreign patents.